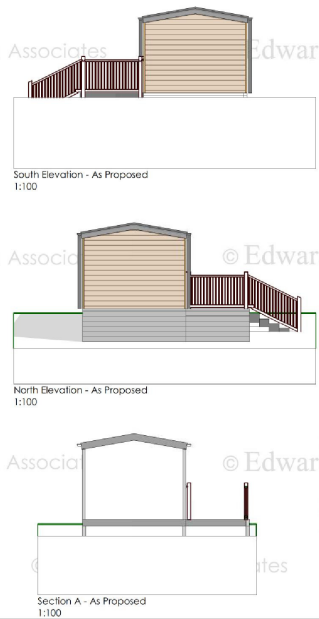
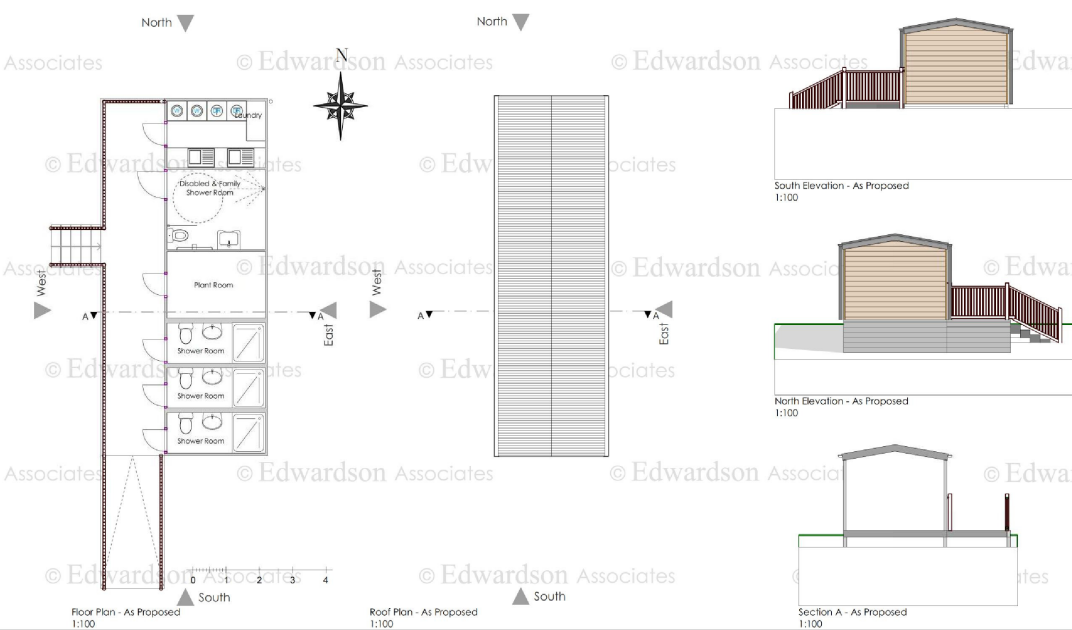
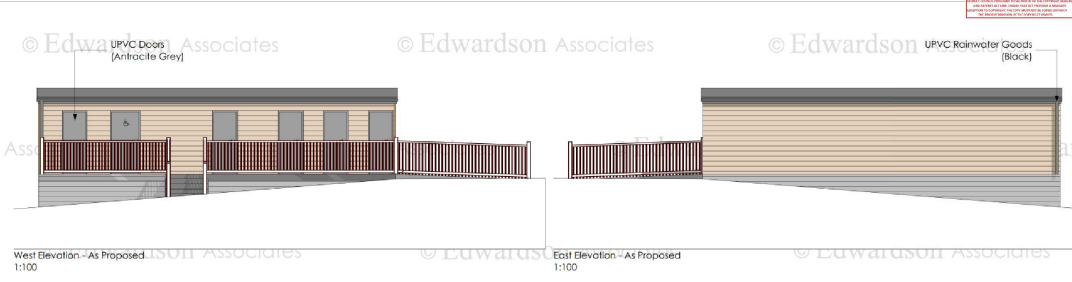


PLEASE NOTE: THIS DRAWING IS FOR INFORMATION ONLY AND IS NOT TO BE USED FOR CONSTRUCTION WITHOUT THE APPROVAL OF THE ARCHITECT.

**NOTE:**  
Do not scale from this Drawing.  
It is the Contractor's responsibility to check all governing dimensions with the engineer and client and verify all dimensions on site before proceeding with any work or issuing any other drawings.  
The drawing is to be used in conjunction with the following materials and specifications and shall be subject to any amendments or changes to the specification and any developments that are required to be approved by the Architect/Project Manager.  
Work and materials shall be in accordance with the Building Regulations where appropriate and to comply with relevant British Standards. Trades to agree with Planning Conditions.  
The drawing is the copyright of Edwardson Associates Limited (not to be reproduced) whole or in part without the written permission.

- NOTES:**
1. All work shall be the definition of a contractor. The meaning of the Contract Documents shall be defined in the Contract Documents and the Contract Bill of Materials.
  2. All work shall be in accordance with the relevant British Standards and any amendments to the Contract Documents shall be in accordance with the Contract Documents.
  3. All work shall be in accordance with the relevant British Standards and any amendments to the Contract Documents shall be in accordance with the Contract Documents.
  4. All work shall be in accordance with the relevant British Standards and any amendments to the Contract Documents shall be in accordance with the Contract Documents.
  5. The work shall be in accordance with the relevant British Standards and any amendments to the Contract Documents shall be in accordance with the Contract Documents.
  6. The work shall be in accordance with the relevant British Standards and any amendments to the Contract Documents shall be in accordance with the Contract Documents.
  7. The work shall be in accordance with the relevant British Standards and any amendments to the Contract Documents shall be in accordance with the Contract Documents.
  8. The work shall be in accordance with the relevant British Standards and any amendments to the Contract Documents shall be in accordance with the Contract Documents.
  9. The work shall be in accordance with the relevant British Standards and any amendments to the Contract Documents shall be in accordance with the Contract Documents.
  10. The work shall be in accordance with the relevant British Standards and any amendments to the Contract Documents shall be in accordance with the Contract Documents.
  11. The work shall be in accordance with the relevant British Standards and any amendments to the Contract Documents shall be in accordance with the Contract Documents.



July 2022

**EDWARDSON ASSOCIATES**

PROJECT: Rehabilitation of static caravan, replacement of existing touring caravan pitches with lodge style caravans and creation of additional seasonal touring caravan pitches at Spring Willow Caravan Park, Main Road, Skelton, Scarborough, YO12 6SR

CLIENT: Mark Atton

DRAWING TITLE: Amenity Block - As Existing/As Proposed  
SCALE @ A3: 1:100 DATE: July 2022

DRAWN: ABR CHECKED: [ ]

REV: ALM 2022/03 DRAWING NO: 003

ISSUE STATUS: Planning REVISION: [ ]

PROJECTS: 12 Hedges Street South  
OFFICE: 100 Hedges Street  
TEL: 01747 299777 FAX: 01747 299778  
HQS@edwardsonassociates.com  
WWW.EDWARDSONASSOCIATES.COM